

# Keen



**arm options**  
See Individual Items for Prices per Arm Option

Black Polyurethane(A1T)

specify finish Wood(A1U)

Upholstered(A1V)

**black base option**  
5-Prong Black Polyurethane Base(SA) - No Upcharge

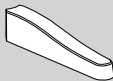
**aluminum base option**  
Polished Aluminum Twis Base(UD) - Add \$52 List Price (\$68 CAN)

**caster options for black or aluminum base**  
No Upcharge

Black Partial Hooded Casters(SQ) - Standard

Black Ha dwood Floor Partial Hooded Casters(SR)

**wood base cap option**  
specify finish



Steel base w th A1Z base caps(A1Z) - Add \$73 List Price (\$95 CAN)

**caster options for wood bases**

Black Hooded Casters(SH)

Brass Hooded Casters(SJ)

Black Hardwood Floor Casters(SK)

Brass Hardwood Floor Casters(SL)

Brass Hooded Ball Casters(SM)

**edge guard options**

No Edge Guards(TC) Standa d - No Upcharge

Plastic Edge Guards(TD) - Add \$31 List Price (\$40 CAN)

**to order**

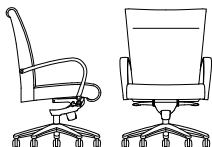
1. Model Number
2. Finish (if applicable)
3. Arm
4. Base
5. Caster
6. Edge Guard
7. Grade/Fabric

Example

64016 / MLC / A1U / SA / SQ / TD / 1 Ace Bisque  
Model Finish Arm Base Caster Edge Guard Grade/Fabric Number

When ordering options, a complete description of the option and its upcharge must be detailed on the order form.

**64016**  
Swivel



**description:**

- solid hardwood frame
- molded curved plywood seat
- fully upholstered frame
- black polyurethane arm (A1T) standard
- pneumatic knee tilt control
- 5-prong black polyurethane base (SA) standard
- black dual wheel partical hooded casters (SQ) standard
- optional wood or upholstered arms
- optional polished aluminum twist base
- optional wood base cap with steel understructure
- optional casters
- optional plastic edge guard

**dimensions:**

width	27.5	inside back	23
depth	29	seat width	22
height	39.5	weight (lbs.)	42
arm ht.	7	cubic ft.	35
from floor	26/28.75	com ydg.	
seat ht.	18/20.75	for (A1T & A1U) options	4
seat depth	18.5	for (A1V) option	4.5
		col sq. ft.	
		for (A1T & A1U) options	80
		for (A1V) option	90

List Pricing/Grade

com	col																	
1	2	3	4	5	6	7	8	9	10	11	12	LV	L1	L2	L3			

**64016 with Black Polyurethane Arms(A1T)**

<b>us</b>	<b>1,330</b>	<b>1,383</b>	<b>1,473</b>	<b>1,580</b>	<b>1,686</b>	<b>1,793</b>	<b>1,900</b>	<b>2,016</b>	<b>2,185</b>	<b>2,364</b>	<b>2,595</b>	<b>2,952</b>	<b>1,725</b>	<b>1,850</b>	<b>2,058</b>	<b>2,316</b>
can	1,729	1,798	1,915	2,054	2,192	2,331	2,470	2,621	2,841	3,073	3,374	3,838	2,243	2,405	2,675	3,011

**64016 with Wood Arms(A1U)**

<b>us</b>	<b>1,603</b>	<b>1,656</b>	<b>1,746</b>	<b>1,853</b>	<b>1,959</b>	<b>2,066</b>	<b>2,173</b>	<b>2,289</b>	<b>2,458</b>	<b>2,637</b>	<b>2,868</b>	<b>3,225</b>	<b>1,998</b>	<b>2,123</b>	<b>2,331</b>	<b>2,589</b>
can	2,084	2,153	2,270	2,409	2,547	2,686	2,825	2,976	3,196	3,428	3,729	4,193	2,598	2,760	3,030	3,366

**64106 with Upholstered Arms(A1V)**

<b>us</b>	<b>1,628</b>	<b>1,688</b>	<b>1,788</b>	<b>1,909</b>	<b>2,029</b>	<b>2,149</b>	<b>2,270</b>	<b>2,400</b>	<b>2,590</b>	<b>2,791</b>	<b>3,052</b>	<b>3,453</b>	<b>2,110</b>	<b>2,209</b>	<b>2,444</b>	<b>2,734</b>
can	2,116	2,194	2,324	2,481	2,637	2,793	2,951	3,120	3,367	3,628	3,967	4,489	2,743	2,871	3,177	3,554